

ASSEMBLY INSTRUCTIONS

FSWINEC - WINE CARRIER

Included Pieces:

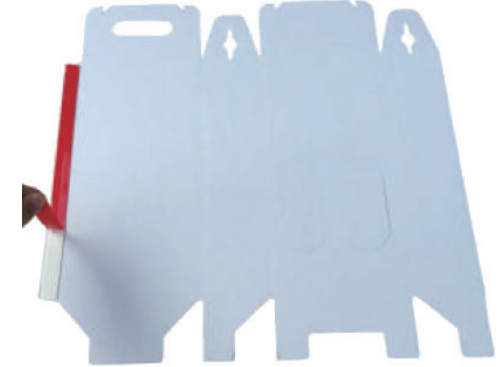
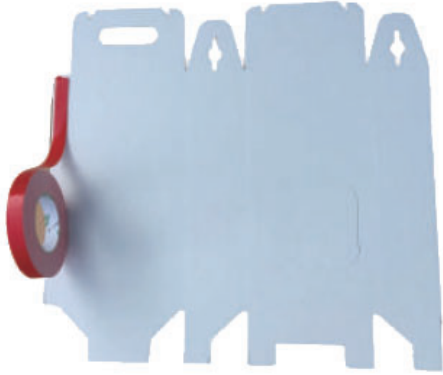


SKU: FSWINECAR2
FSWINECRG2
FSWINECAR3
FSWINECRG3

Scan QR code to visit
the product page:



1. Apply the double sided tape onto the long flap on the outside of the flat cardboard and cut the length needed. Carefully peel off the protective layer and discard.



2. Fold up the end flap from the other side, and attach it onto the double sided tape. Be sure the edge align with the crease. Apply pressure to make sure the tape fully contact with the cardboard and the edge is secure.



3. Square up the box and fold the bottom flaps as shown in below sequences. Push the cutouts at the front inside to create dividers for wine bottles. The assembly is finished.

